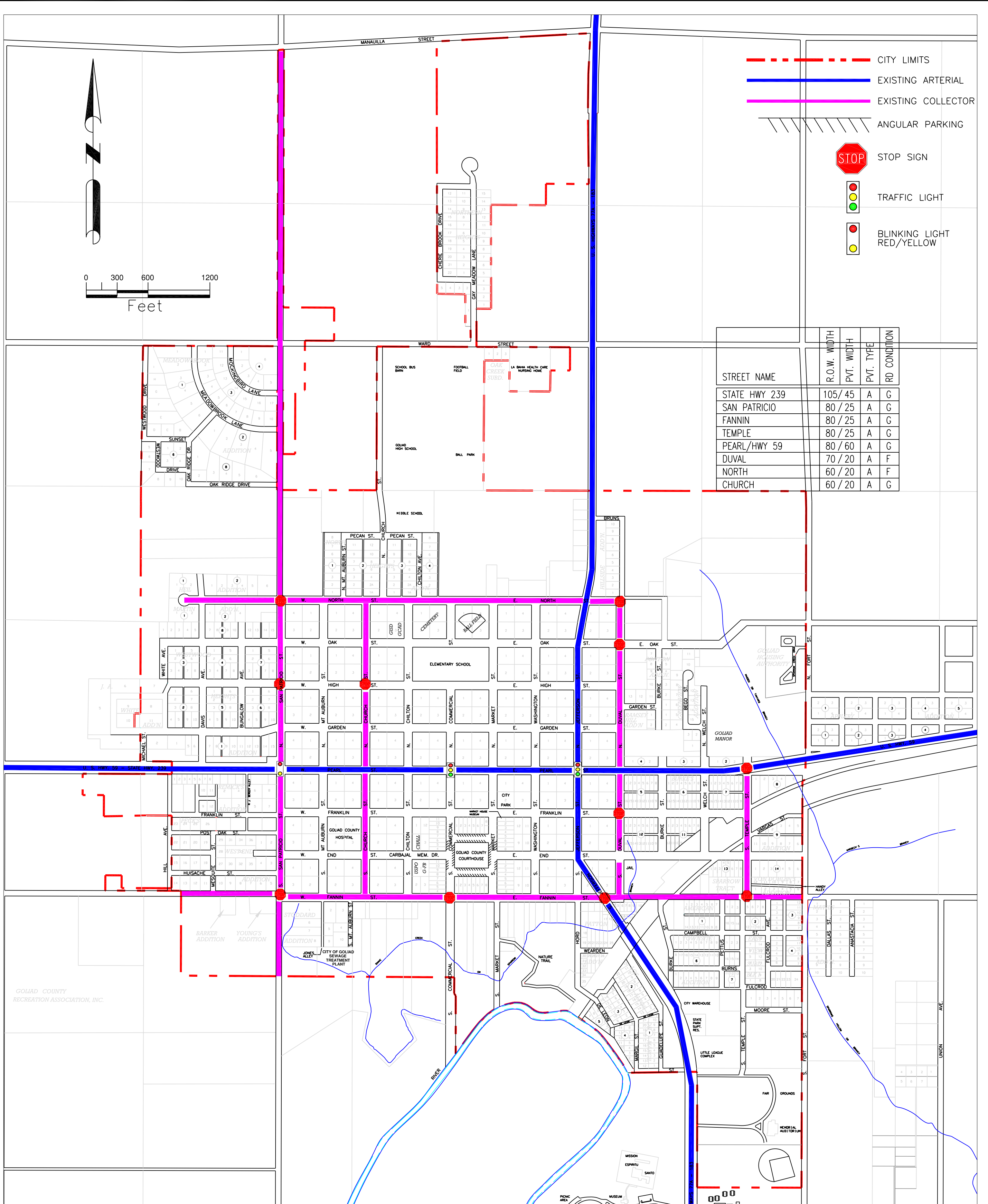


- CITY LIMITS
- EXISTING ARTERIAL
- EXISTING COLLECTOR
- ANGULAR PARKING
- STOP SIGN
- TRAFFIC LIGHT
- BLINKING LIGHT RED/YELLOW

STREET NAME	R.O.W. WIDTH	PVT. WIDTH	PVT. TYPE	RD. CONDITION
STATE HWY 239	105 / 45	A	G	
SAN PATRICIO	80 / 25	A	G	
FANNIN	80 / 25	A	G	
TEMPLE	80 / 25	A	G	
PEARL/HWY 59	80 / 60	A	G	
DUVAL	70 / 20	A	F	
NORTH	60 / 20	A	F	
CHURCH	60 / 20	A	G	



Apr 22, 2005 - 8:23am

Prepared by
PUBLIC MANAGEMENT, INC.

P.O. Box 1827
Cleveland, Texas 77328-1827
(281) 592-0439

THE PREPARATION OF THIS DOCUMENT WAS FINANCED THROUGH PROVISIONS OF A TEXAS COMMUNITY DEVELOPMENT PROGRAM GRANT FROM THE U. S. DEPARTMENT OF HOUSING AND URBAN DEVELOPMENT.

FINANCED THROUGH THE OFFICE OF RURAL COMMUNITY AFFAIRS OF THE STATE OF TEXAS.

EXHIBIT

J

17x22

2005
CITY OF GOLIAD, TEXAS
EXISTING THOROUGHFARES